



## QUICKGUIDE: HOW TO INSTALL MX SECUREDRIVEEX2 ENCRYPTION UTILITY?

MX Technology has released MX SecureDrive EX 2 AES 256-bit encryption utility version 2\_1\_11\_12 for the MX-OTGuard Series Flash Drive on 07/20. The utility is pre-installed on all drives of MX-OTGuard series. The utility can be downloaded and reinstalled by user at any time!

**WARNING#1: MX SecureDrive EX 2 encryption utility supports only MX-OTGuard Series OTG/USB 3.0 flash drives!**

EASY STEPS TO INSTALL MX-Technology MX-SecureDrive EX 2 utility for MX-OTGuard series pendrives:

1. Download the encryption utility: SecureDriveEx2\_Flash\_MX\_2\_1\_11\_12
2. Unzip SecureDriveEx2\_Flash\_MX\_2\_1\_11\_12.rar and right click on SecureDriveEx2\_Flash\_MX\_2\_1\_11\_12.exe, choose the language and install the utility on your computer. This launches the utility Setup Wizard



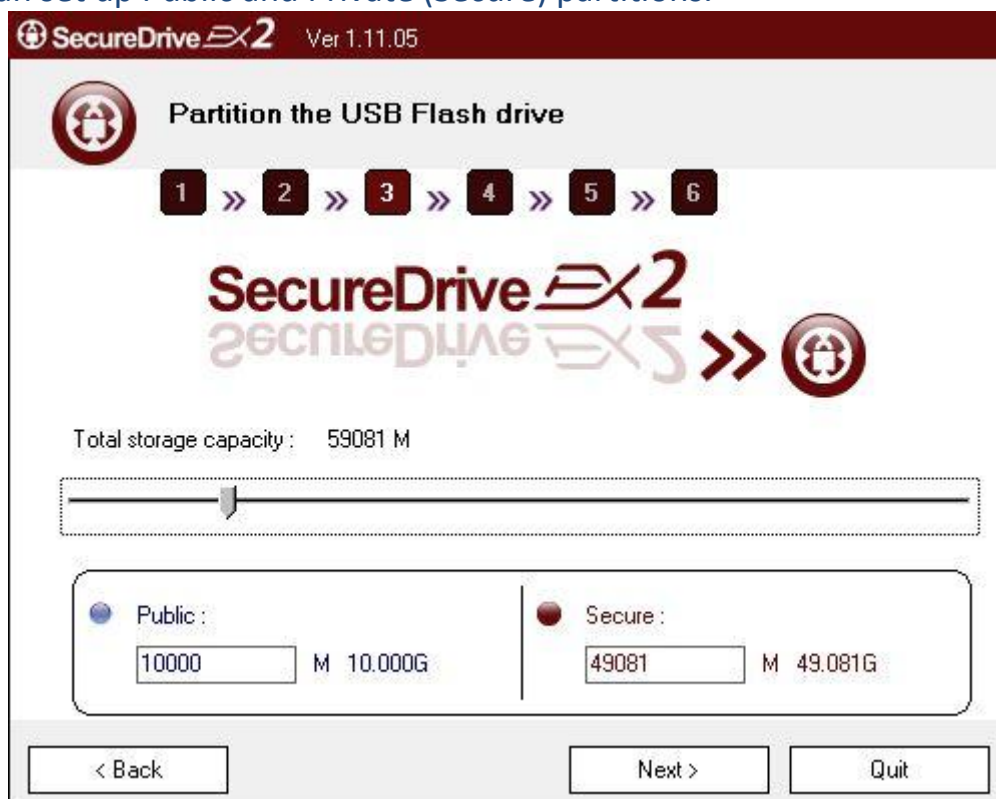
3. Double click on the Next> button and launch the utility.



4. Please enter 20-digit serial key number that is printed on your flash drive packing.



5. Now you can set up Public and Private (Secure) partitions.





**WARNING#2: MX Secure Drive EX2 encryption utility will lock down after 5 repeated attempts to enter 20-digit serial key within one day or 10 repeated attempts to enter 20-digit serial key number within one week.**